



VKP40...

Setting the D-shaft to 45° for SQN30/SQN70/SQN72

User documentation

VKP40 and this User Documentation are intended for original equipment manufacturers (OEMs) using the VKP40 in or on their products



Note!

This documentation is only valid together with the VKP40 data sheet (N7646)!

Overview

1	Supplementary documentation	3
2	Warning notes	3
3	Typographical conventions	4
4	General.....	4
5	Step-by-step guide.....	5

1 Supplementary documentation

Product type	Designation	Documentation type	Documentation number
VKP40	Proportional controlling element	Data sheet	CC1N7646
VKP40	Proportional controlling element	Mounting instructions	74 319 0843 0 (M7646)
SQN30	Actuator	Data sheet	CC1N7808
SQN70	Actuator	Data sheet	CC1N7804
SQN72	Actuator	Data sheet	CC1N7802



Note!

This document only refers to the product type – not the *product designation*. See the table below for details.

Product type	Product designation
SQN30	Actuator
SQN70	Actuator
SQN72	Actuator

2 Warning notes



Warning!

All the safety, warning, and technical notes given in the VKP40 data sheet (N7646) also apply to this document in full.

To avoid personal injury or damage to property or the environment, these warning notes must be observed.

3 Typographical conventions

Safety notes

This user documentation contains notes that must be observed to ensure your personal safety and to prevent material damage. The instructions and notes are highlighted by warning triangles or a hand symbol and are presented as follows, depending on the hazard level:



Warning

means that death, severe personal injury or substantial damage to property **can** occur if adequate precautionary measures are not taken.



Caution

means that minor personal injury or property damage **can** occur if adequate precautionary measures are not taken.



Note

draws your attention to **important information** on the product, on product handling, or to a special part of the documentation.

Qualified personnel

Only **qualified personnel** are allowed to start up and operate the unit. Qualified personnel in the context of the safety-related notes contained in this user documentation are persons who are authorized to commission, ground, and tag units, systems, and electrical circuits in compliance with established safety practices and standards.

Correct use

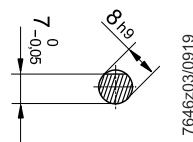
Note the following:

The unit may only be used for the applications described in the technical documentation and only in conjunction with devices or components from other suppliers that have been approved or recommended by Siemens.

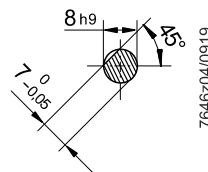
The product can only function correctly and safely if shipped, stored, set up, and installed correctly, and operated and maintained with care.

4 General

The SQN30/SQN70/SQN72 are available with different types of drive shafts. The VKP40 is prepared at the factory with a D-shaft for an angle of 0°. By making a simple adjustment, all VKP40 can also be used for a D-shaft with a 45° angle.



0° D-shaft (VKP40 factory setting)

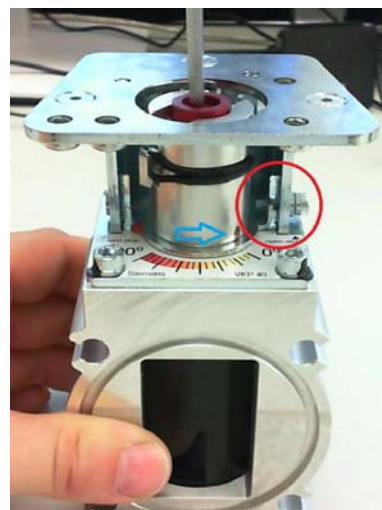
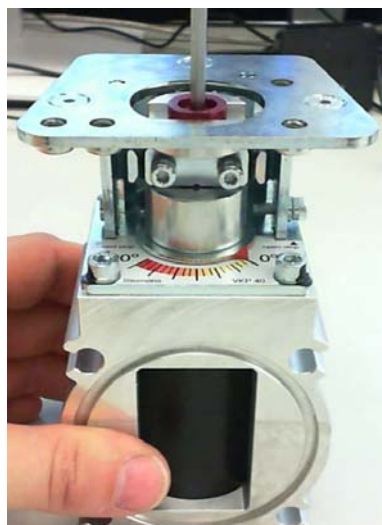


45° D-shaft (VKP40 realignment)

5 Step-by-step guide

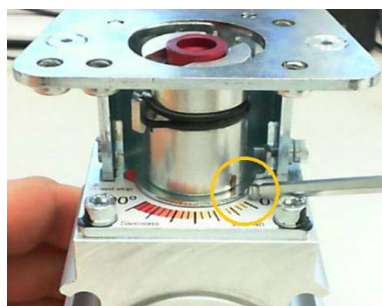
Step 1

Take an Allen key (4 mm) and turn the coupling and the cylinder on the VKP40 **counterclockwise** until they reach the **mechanical stop**. Continue to turn to loosen the screw from the coupling.



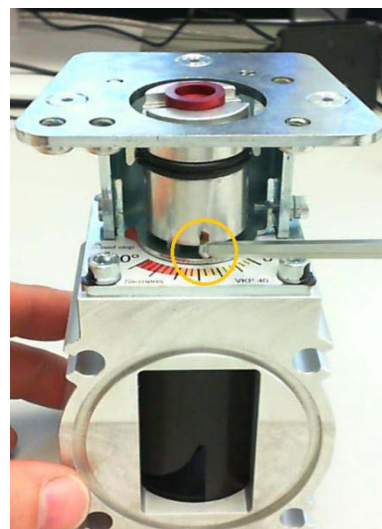
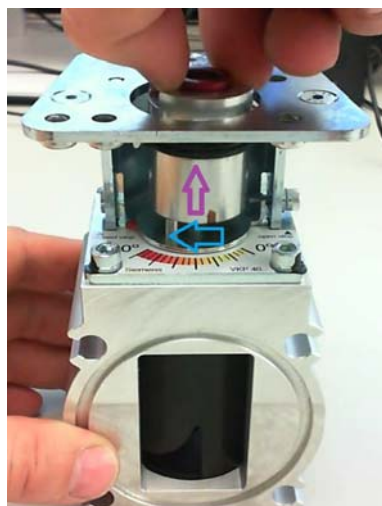
Step 2

Mark the cylinder in the 0° position to make it easier to find the 0° position of the cylinder while setting up.



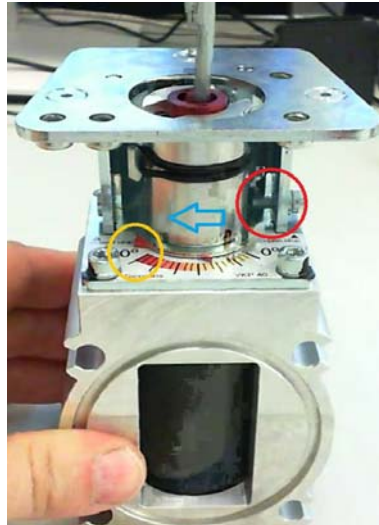
Step 3

Lift the coupling by approximately 5 mm until the coupling is clear of the drive shaft pins. Turn the coupling 45° clockwise. Place the coupling back on the drive shaft pins. The 0° marking on the cylinder should now be in line with the 45° position on the axis position scale.



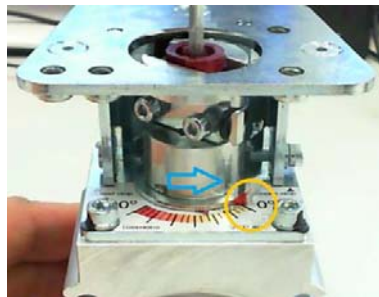
Step 4

Tighten the coupling screw by turning it clockwise until the coupling and the cylinder of the VKP40 reach the mechanical stop. The position indicator of the VKP40 should indicate a position beyond the 90° position on the position scale.



Step 5

Take an Allen key (4 mm) and turn the cylinder counterclockwise back to the 0° position of the position scale.



The VKP40 is now ready for the use of an SQN30/SQN70/SQN72 with a D-shaft with a 45° angle.